

## Turkey Salami, Sliced, 1oz

### Product Details:

**Item Number:** 50370  
**Pack Size:** 4/5.5 lb.  
**Serving Per Case:** 176  
**Net Weight:** 22 lbs.

**Kosher:** No  
**Meal Contribution:** 2 M/MA  
**Class:** Always Available  
**Shelf Life:** 180 Days Frozen  
**Temperature Class:** Frozen  
**Cook State:** Fully Cooked  
**GTIN-12 UPC:**  
**GTIN-14:** 10042222258026

**Sales Price Per:** NA  
**Case Price:** NA

### Ingredients:

MECHANICALLY SEPARATED TURKEY, SEASONING (SALT, DEXTROSE, CORN SYRUP SOLIDS, SPICES, GARLIC POWDER, SODIUM ERYTHORBATE), WATER, CONTAINS 2% OR LESS POTASSIUM LACTATE, CARRAGEENAN, SALT, SODIUM DIACETATE, NATURAL SMOKE FLAVORING, SODIUM NITRITE. NO GLUTEN.

### Allergen Statement:

Allergen info not on label, please contact your Account Manager

### Benefits and Suggested Use:

Great for sandwiches.

## Nutrition Facts

This is a representation of the nutritional label. The nutritional label on the product may vary.

**Serving Size** 2 oz.

Amount Per Serving

**Calories** 110

% Daily Value \*

**Total Fat** 9g 12%

Saturated Fat 2.5g 13%

Trans Fat 0g

**Cholesterol** 45mg 15%

**Sodium** 630mg 27%

**Total Carbohydrate** 2g 1%

Dietary Fiber 0g 0%

Total Sugars 1g

Incl. Added Sugars 1g 2%

**Protein** 7g 14%

Vitamin D 0mcg 0%

Calcium 50mg 4%

Iron 0.7mg 4%

Potassium 90mg 2%

\* The % Daily Value tells you how much a nutrient in a serving of food contributes to a daily diet. 2,000 calories a day is used for general nutrition advice.

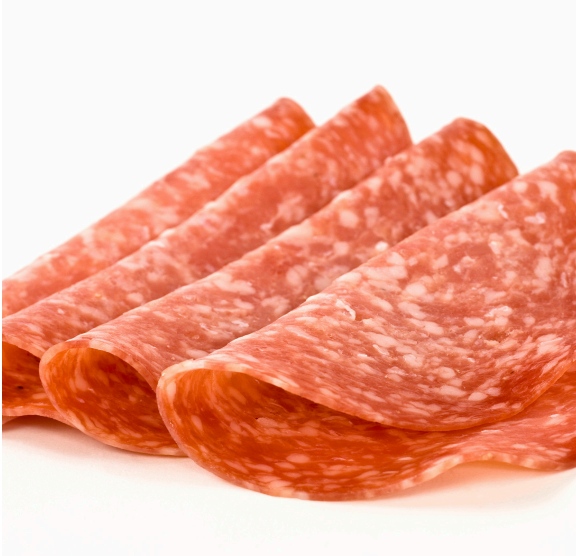
### National Food Group

**Email:** info@nationalfoodgroup.com . **Direct:** 800.886.6866

**Fax:** 248.669.3000

46820 Magellan Dr., Suite A, Novi, MI 48377-2454

[www.nationalfoodgroup.com](http://www.nationalfoodgroup.com) . **Call Toll Free:** 800.886.6866



## Turkey Salami, Sliced, 1oz

### Bid Specifications:

SLICED TURKEY SALAMI: 1 oz perfect slices of Turkey Salami. Must be pork free! Pack: 4/5.5 lb pouches per case. 1 year shelf life frozen. Each 2 oz serving provides 140 calories and 20g protein! National Food Group item 50370 or approved equal.

### Preparation and Additional Information:

### Logistics Information:

**Gross Weight:** 22.814 lbs

**Case Dimensions:** 19.31 X 13.31 X 4.13

**Pallet Count:** 77

**Double Stack:** No

**Cube:** 0.614

**Block and Tier:** 7 and 11

The information provided above is, to the knowledge of National Food Group, true and accurate based on information provided to National Food Group; provided that National Food Group does not make any express or implied warranties with respect to any such information shall have no liability for any inaccuracies contained in any such information.

### National Food Group

**Email:** [info@nationalfoodgroup.com](mailto:info@nationalfoodgroup.com) . **Direct:** 800.886.6866

**Fax:** 248.669.3000

46820 Magellan Dr., Suite A, Novi, MI 48377-2454

[www.nationalfoodgroup.com](http://www.nationalfoodgroup.com) . **Call Toll Free:** 800.886.6866