

## Turkey, Bologna, Sliced, 1oz.

### Product Details:

**Item Number:** 50360  
**Pack Size:** 4/5.5 lb.  
**Serving Per Case:** 176  
**Net Weight:** 22 lbs.

**Kosher:** No  
**Meal Contribution:** 2 M/MA  
**Class:** Always Available  
**Shelf Life:** 180 Days Frozen  
**Temperature Class:** Frozen  
**Cook State:** Fully Cooked  
**GTIN-12 UPC:**  
**GTIN-14:** 10042222257920

**Sales Price Per:** NA  
**Case Price:** NA

### Ingredients:

MECHANICALLY SEPARATED TURKEY, SALT, WATER, CONTAINS 2% OR LESS SEASONING (CORN SYRUP SOLIDS, DEXTROSE, SUGAR, SODIUM ERYTHORBATE, SPICE EXTRACTIVES), CARRAGEENAN, SODIUM PHOSPHATE, NATURAL SMOKE FLAVORING, SODIUM NITRITE.

### Allergen Statement:

Allergen info not on label, please contact your Account Manager

### Benefits and Suggested Use:

Great for sandwiches.

## Nutrition Facts

This is a representation of the nutritional label. The nutritional label on the product may vary.

**Serving Size** 2 oz.

Amount Per Serving

**Calories** 120

% Daily Value \*

**Total Fat** 9g 12%

Saturated Fat 2.5g 13%

Trans Fat 0g

**Cholesterol** 50mg 17%

**Sodium** 680mg 30%

**Total Carbohydrate** 1g 0%

Dietary Fiber 0g 0%

Total Sugars 0g

Incl. Added Sugars 0g 0%

**Protein** 7g 14%

Vitamin D 0mcg 0%

Calcium 80mg 6%

Iron 0.7mg 4%

Potassium 90mg 2%

\* The % Daily Value tells you how much a nutrient in a serving of food contributes to a daily diet. 2,000 calories a day is used for general nutrition advice.

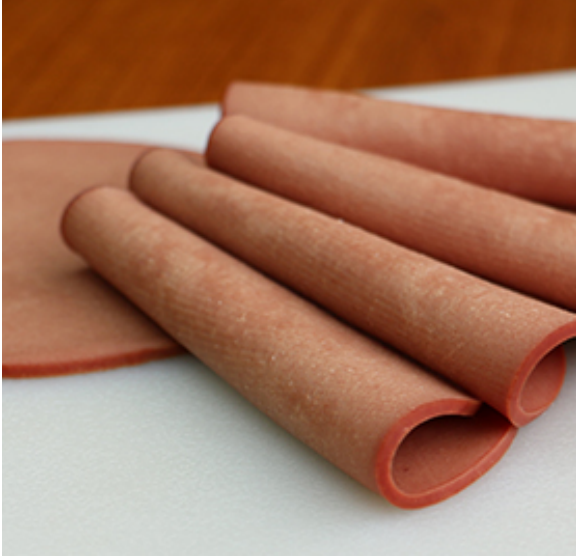
### National Food Group

**Email:** info@nationalfoodgroup.com . **Direct:** 800.886.6866

**Fax:** 248.669.3000

46820 Magellan Dr., Suite A, Novi, MI 48377-2454

[www.nationalfoodgroup.com](http://www.nationalfoodgroup.com) . **Call Toll Free:** 800.886.6866



## Turkey, Bologna, Sliced, 1oz.

### Bid Specifications:

SLICED TURKEY BOLOGNA: 1 oz perfect slices of turkey bologna. NO PORK. Just sliced turkey ready to eat. Pack: 4/5.5 lb pouches per case. Each 2 oz serving provides 110 calories and 8g protein per portion. National Food Group item 50360 or approved equal.

### Preparation and Additional Information:

### Logistics Information:

**Gross Weight:** 22.809 lbs

**Case Dimensions:** 19.31 X 13.31 X 4.13

**Pallet Count:** 77

**Double Stack:** No

**Cube:** 0.614

**Block and Tier:** 7 and 11

The information provided above is, to the knowledge of National Food Group, true and accurate based on information provided to National Food Group; provided that National Food Group does not make any express or implied warranties with respect to any such information shall have no liability for any inaccuracies contained in any such information.

### National Food Group

**Email:** [info@nationalfoodgroup.com](mailto:info@nationalfoodgroup.com) . **Direct:** 800.886.6866

**Fax:** 248.669.3000

46820 Magellan Dr., Suite A, Novi, MI 48377-2454

[www.nationalfoodgroup.com](http://www.nationalfoodgroup.com) . **Call Toll Free:** 800.886.6866