

## Sandwich, Turkey Bolo & Cheese on Round Bun, WG, 3.95oz, IW

### Product Details:

**Item Number:** 602191    **Kosher:** No  
**Pack Size:** 48/3.95oz.    **Meal Contribution:** 2 M/MA 2 GRN  
**Serving Per Case:** 48    **Class:** Always Available  
**Net Weight:** 11.9 lbs.    **Shelf Life:** 12 Months Frozen; 5 Days Refrigeration  
**Temperature Class:** Frozen  
**Cook State:** Fully Cooked  
**Sales Price Per:** NA    **GTIN-12 UPC:**  
**Case Price:** NA    **GTIN-14:**

### Ingredients:

WHOLE GRAIN ROUND BUN: WHITE WHOLE WHEAT FLOUR, ENRICHED FLOUR (WHEAT FLOUR, MALTED BARLEY FLOUR, NIACIN, IRON, THIAMIN MONONITRATE, RIBOFLAVIN, FOLIC ACID), WATER, HIGH FRUCTOSE CORN SYRUP, YEAST, WHEAT GLUTEN, SOYBEAN OIL, CONTAINS 2% OR LESS OF THE FOLLOWING: SALT, HONEY, INVERT SUGAR, CORN SYRUP, WHEAT STARCH, MOLASSES, SODIUM STEAROYL LACTYLATE, VINEGAR, CALCIUM PROPIONATE (PRESERVATIVE), CALCIUM SULFATE, ASCORBIC ACID, AMMONIUM SULFATE, CITRIC ACID, ETHOXYLATED MONO- AND DIGLYCERIDES. TURKEY BOLOGNA: MECHANICALLY SEPARATED TURKEY, WATER, SALT, SEASONING (DEXTRROSE, MUSTARD, DEHYDRATED ONION AND GARLIC, SPICE EXTRACTIVES INCLUDING PAPRIKA), LESS THAN 2% MODIFIED FOOD STARCH, POTASSIUM ACETATE, SODIUM PHOSPHATES, POTASSIUM LACTATE, SODIUM NITRITE, SODIUM ERYTHORBATE. YELLOW AMERICAN CHEESE REDUCED FAT & SODIUM: CULTURED SKIM MILK AND MILK, POTASSIUM CITRATE, SODIUM CITRATE, PAPRIKA AND ANNATTO (COLOR), SALT, ENZYMES, SORBIC ACID (PRESERVATIVE), SUNFLOWER LECITHIN (ANTI-STICKING AGENT).

### Allergen Statement:

Wheat, Soy and Milk

### Benefits and Suggested Use:

Individually wrapped, perfect on the go!

## Nutrition Facts

This is a representation of the nutritional label. The nutritional label on the product may vary.

<b>Serving Size</b>	3.95oz.
<b>Amount Per Serving</b>	
<b>Calories</b>	<b>260</b>
	<b>% Daily Value *</b>
<b>Total Fat</b> 10g	<b>12%</b>
Saturated Fat 3g	<b>16%</b>
Trans Fat 0g	
<b>Cholesterol</b> 40mg	<b>13%</b>
<b>Sodium</b> 540mg	<b>23%</b>
<b>Total Carbohydrate</b> 30g	<b>10%</b>
Dietary Fiber 2g	<b>7%</b>
Total Sugars 4g	
Incl. Added Sugars 4g	<b>8%</b>
<b>Protein</b> 14g	—
Vitamin D	0%
Calcium 226mg	15%
Iron 3mg	15%
Potassium 270mg	6%

\* The % Daily Value tells you how much a nutrient in a serving of food contributes to a daily diet. 2,000 calories a day is used for general nutrition advice.

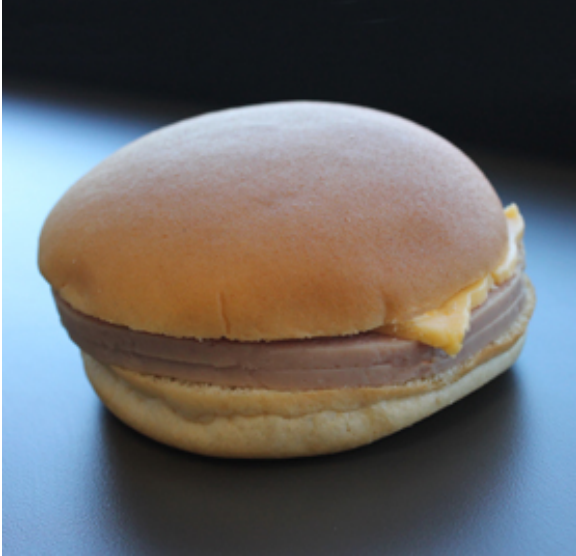
### National Food Group

**Email:** info@nationalfoodgroup.com . **Direct:** 800.886.6866

**Fax:** 248.669.3000

46820 Magellan Dr., Suite A, Novi, MI 48377-2454

**www.nationalfoodgroup.com** . **Call Toll Free:** 800.886.6866



## Sandwich, Turkey Bolo & Cheese on Round Bun, WG, 3.95oz, IW

### Preparation and Additional Information:

#### Instructions for Preparation and Cooking:

Ready To Eat. Thaw in refrigerator overnight. Keep Refrigerated. Remove from package if heating in oven.

### Logistics Information:

**Gross Weight:** 13.2 lbs

**Case Dimensions:** 17.25 X 9.75 X 9.5

**Pallet Count:** 40

**Double Stack:** Yes

**Cube:** 0.925

**Block and Tier:** 10 and 4

The information provided above is, to the knowledge of National Food Group, true and accurate based on information provided to National Food Group; provided that National Food Group does not make any express or implied warranties with respect to any such information shall have no liability for any inaccuracies contained in any such information.

#### National Food Group

**Email:** [info@nationalfoodgroup.com](mailto:info@nationalfoodgroup.com) . **Direct:** 800.886.6866

**Fax:** 248.669.3000

46820 Magellan Dr., Suite A, Novi, MI 48377-2454

[www.nationalfoodgroup.com](http://www.nationalfoodgroup.com) . **Call Toll Free:** 800.886.6866